



iCR1000 Dual True Flat Scan Path™



Computed Radiography Film Digitizers Teleradiology PACS

iCR1000 Dual

Computed Radiography & Film Scanner System

The *iCR1000 Dual's* patented design incorporates a true flat scan path™, an ultra precise scan mechanism, and protective cassettes to produce over 300,000 high resolution images per plate.

iCRco imaging plates are fixed to a rigid back panel. Nothing ever touches the active area of the phosphor plate resulting in an artifact free image. Unlike most CR products, the *iCR1000 Dual* uses no rollers to transport the plate across the scan head. A positive traction drive system ensures perfect artifact free reproduction.

The *iCR1000 Dual* has been designed to be used in General Radiology, Orthopedics, Dental and Pediatric applications as well as complement existing centralized CR installations. Its up to 70 plates per hour throughput makes it ideal for low to medium volume environments. The *iCR1000 Dual* is the only CR solution in the world that also enables archiving of old Film Exams to achieve an uncompromised digital imaging environment.

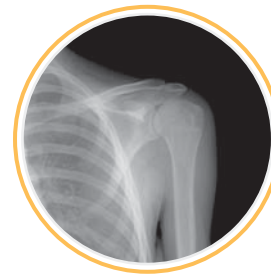
The *iCR1000 Dual's* small footprint and the optional wall-mount makes it a perfect fit for small spaces or installation inside the X-Ray room for maximum productivity.



True Flat Scan Path



Integrated Film Scanner



High Fidelity Images

***iCR* technology** is the result of precision engineering which integrates electronic, optical and mechanical design.

This guarantees production of high quality digital imaging tools for the medical profession.





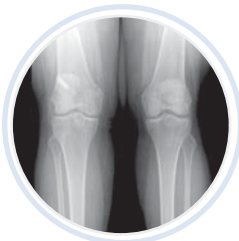
Key Items

- Premium CR Solution
- 50-70 plates per hour
- True Flat Scan Path™
- Low Cost of Ownership
- Advanced Image Processing
- 12-month warranty on equipment and cassettes
- 3-year warranty on iCR imaging plates
- iCR QPC XSCAN32 Software
- iCR EDGE High Fidelity Multi Scale Image Processing
- Interactive and automatic Image Processing

Learn More

For more information about iCRco Computed Radiography Systems, Film Digitizers and Software. Please visit www.icrcompany.com.

- iCRco's full range of CR solutions are designed to grow and adapt to the evolving medical imaging environment.
- From image acquisition, ID and digitizing, to image quality control and processing, we offer everything you need for streamlined, effective workflow management.
- iCRco, Inc. manufactures the new iCR Intelligent Computed Radiography device and X-Ray Digitizing equipment with precision engineering integrating electronic, optical and mechanical designs.



www.icrcompany.com

Grayscale Resolution:

16 bit source file 65000 levels of Gray default
12 bit (4096 shades of gray) sub-sample available

Dimensions:

16W x 22H x 42L inches
40.6W x 55.9 x 106.7 centimeters

Weight:

Approx. 112 lbs

Power:

100-240V AC/ 2.5A max; 47-63Hz

Accepted Cassettes:

35x43 cm (14x17 in.)
24x30 cm (10x12 in.)
18x24 cm (8x10 in.)

Odd plate sizes accepted and flexible plates scanned using Flex-scan cassette system (patent pending).

Environmental Conditions:

Temperature; 0-40°C/32-105°F
Temperature change: 0.5°C/min
Humidity: 15%-95% RH
Magnetic Fields: max 1260 µT
(in Conformance with EN 61000-4-8: Level 3), 10 A/m

Heat Dissipation:

Standby 230W
Maximum 1610W

Computer Configuration:

Pentium 4 Class Device 80GHD, 1 GB RAM, Windows 2000 or XP, Modem, NIC Card, CDR-W, USB II high speed interface

Scan Time:

70 Plates per hour mixed Cassette Sizes
50 Plates per hour 14x17 Cassettes only
42 second access time
70 seconds 14x17 at 200 Micron spot size

Microns Dependent On:

Processor Speed
RAM Disk Access time
Available RAM
Video Card

Film Scanner Specifications

Resolution Selections:

4 to 1000 dpi in 1 step increments

Exposure Settings:

From - 18 to + 600 in 3 step increments (higher values for darker films)

Gamma Settings:

Customizable and preset curves included

Optical Density Range:

.01-4.7 O.D. actualUser selectable: 2 and 4 times over sampling. (Over sampling lowers background noise)

Dual Interface:

FireWire or Hi-Speed USB Interface
USB Standard
Firewire card and cable optional (High speed interface)

Scanning Modes:

16 bit grayscale (65000 levels of gray).
12 to 8 bit conversion (256 optimized gray levels) 24,30 and 36 color option available from factory

**U.S. and International patents granted
Additional patents pending
Medical CE compliant
FDA Approved
CE Approved**



20406 Earl Street, Torrance, CA 90503
Phone: (310) 921-9559 Fax: (310) 921-2559
Email: info@icrcompany.com
Website: www.icrcompany.com

©2006 iCRco, Inc.

* Specifications are subject to change without notice.