



# *i*CR2600

True Flat Scan Path™



Computed Radiography Film Digitizers Teleradiology PACS

# iCR2600

## Computed Radiography System

The iCR2600's patented design incorporates a true flat scan path™, an ultra precise scan mechanism, and protective cassettes to produce over 300,000 high resolution images per plate.

iCRco imaging plates are fixed to a rigid back panel. Nothing ever touches the active area of the phosphor plate resulting in an artifact free image. Unlike most CR products, the iCR2600 uses no rollers to transport the plate across the scan head. A positive traction drive system ensures perfect artifact free reproduction.

The iCR2600 has been designed to be used in General Radiology, Orthopedics, Dental and Pediatric applications as well as complement existing centralized CR installations. Its up to 90 plates per hour throughput makes it ideal for medium to high volume environments.

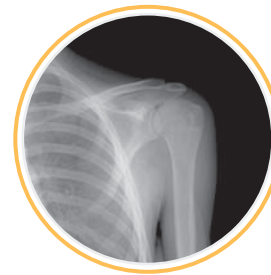
The iCR2600's small footprint and the optional wall-mount makes it a perfect fit for small spaces or installation inside the X-Ray room for maximum productivity.



*Patented Design Technology*



*True Flat Scan Path*



*High Fidelity Images*

**iCR technology** is the result of precision engineering which integrates electronic, optical and mechanical design.

This guarantees production of high quality digital imaging tools for the medical profession.





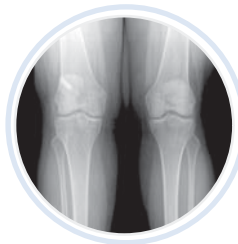
## Key Items

- Premium CR Solution
- 70-90 plates per hour
- True Flat Scan Path™
- Low Cost of Ownership
- Advanced Image Processing
- 12-month warranty on equipment and cassettes
- 3-year warranty on iCR imaging plates
- iCR QPC XSCAN32 Software
- iCR EDGE High Fidelity Multi Scale Image Processing
- Interactive and automatic Image Processing

## Learn More

For more information about iCRco Computed Radiography Systems, Film Digitizers and Software. Please visit [www.icrcompany.com](http://www.icrcompany.com).

- iCRco's full range of CR solutions are designed to grow and adapt to the evolving medical imaging environment.
- From image acquisition, ID and digitizing, to image quality control and processing, we offer everything you need for streamlined, effective workflow management.
- iCRco, Inc. manufactures the new iCR Intelligent Computed Radiography device and X-Ray Digitizing equipment with precision engineering integrating electronic, optical and mechanical designs.



[www.icrcompany.com](http://www.icrcompany.com)

**Grayscale Resolution:**

16 bits/pixel source file  
65000 Shades of Gray

**Automatic erasing**

**Automatic cassette handling**

**Dimensions:**

14W x 26H x 45L inches  
35.6W x 66H x 114.3 centimeters

**Weight:**

Approx. 85 lbs

**Power:**

100-240V AC/ 2.5A max; 47-63Hz

**Accepted Cassettes:**

35x43 cm (14x17 in.)  
24x30 cm (10x12 in.)  
18x24 cm (8x10 in.)

Odd plate sizes accepted and flexible plates scanned using Flex-scan cassette system (patent pending).

**Environmental Conditions:**

Temperature; 0-40°C/32-105°F  
Temperature change: 0.5°C/min  
Humidity: 15%-95% RH  
Magnetic Fields: max 1260 µT  
(in Conformance with EN 61000-4-8: Level 3), 10 A/m

**Heat Dissipation:**

Standby 230W  
Maximum 1610W

\* Specifications are subject to change without notice.

**Computer Configuration:**

Pentium 4 Class Device  
80GHD, 1GB RAM  
Windows 2000 or XP  
Modem, NIC Card, CDR-W  
USB 2 high speed interface

**Scan Time:**

90 Plates per hour mixed Cassette Sizes  
70 Plates per hour 14x17 Cassettes only  
40 second access time  
52 seconds 14x17 at 200 Micron spot size

**Microns Dependent On:**

Processor Speed  
RAM Disk Access time  
Video Card

**Other Features:**

Integrated Eraser

Variable Erase Time Selectable

Scanning and Erasing in one step,  
Ultra High Throughput

1 Internal Moving Part

Precision Rack and Pinion Drive System

High Resolution and Standard Resolution  
Selectable Scanning Parameters

True Flat Scan Path™

No Plate Damage/Wear during Scan  
Process.

**U.S. and International patents granted  
Additional patents pending  
Medical CE compliant  
FDA Approved  
CE Approved**

20406 Earl Street, Torrance, CA 90503  
Phone: (310) 921-9559 Fax: (310) 921-2559  
Email: info@icrcompany.com  
Website: www.icrcompany.com

©2006 iCRco, Inc.

